

290241

R020225

SCAFCO®

SQUARE FLOOR AERATION

ASSEMBLY & INSTALLATION

INSTRUCTIONS

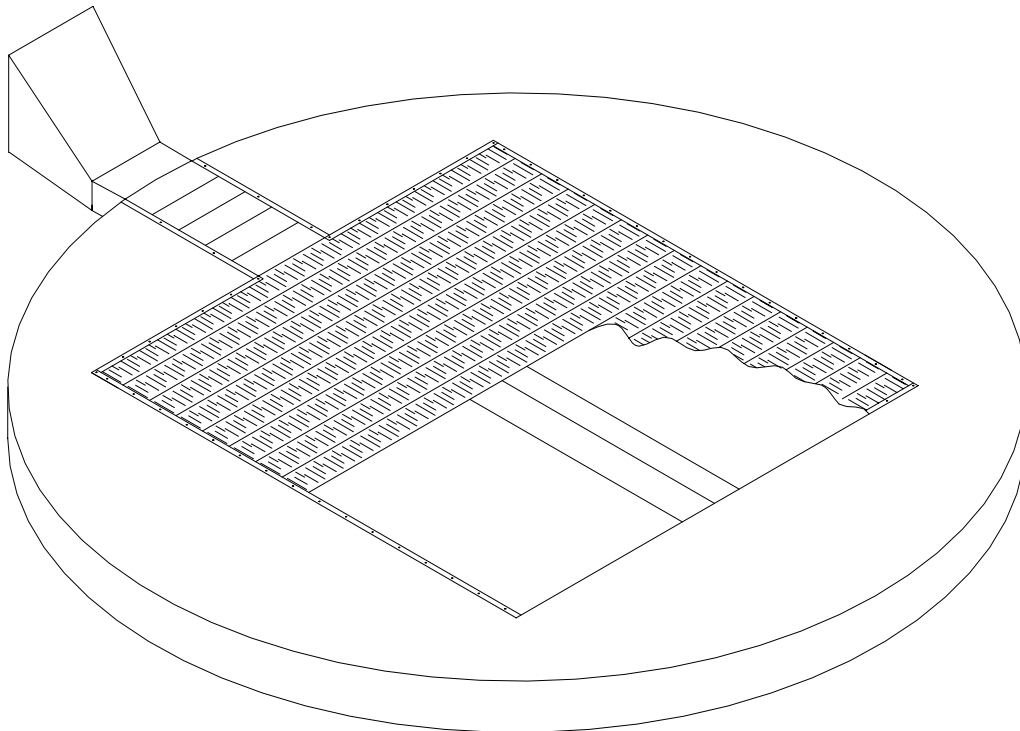




TABLE OF CONTENTS

TABLE OF CONTENTS.....1

SQUARE FLOOR AERATION PLAN VIEW2

RAISED TRANSITION ASSEMBLY3

RAISED TRANSITION REDUCER ASSEMBLY3

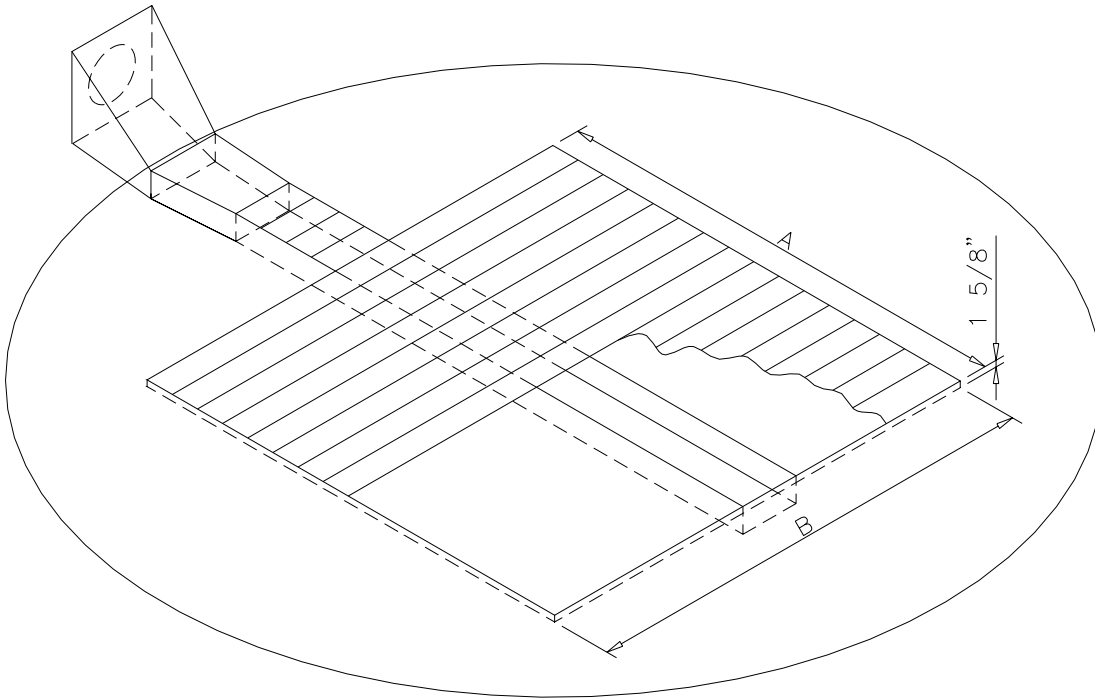
RAISED TRANSITION & DUCT ASSEMBLY4

FLUSH FORM ASSEMBLY4

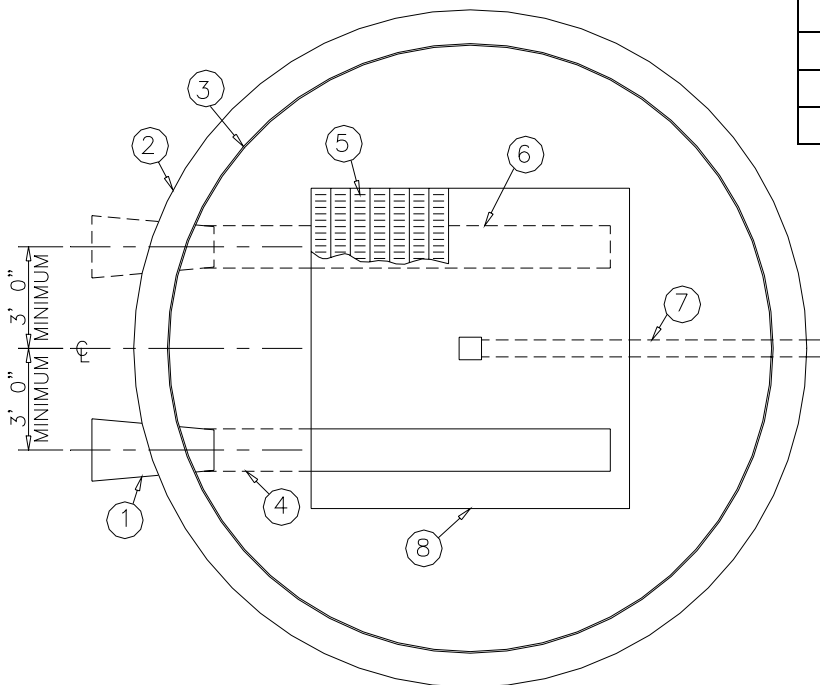
CROSS SECTION THROUGH BIN FOUNDATION5

ISOMETRIC VIEW OF SQUARE FLOOR AERATION SYSTEM6

PLAN VIEW SQUARE FLOOR7



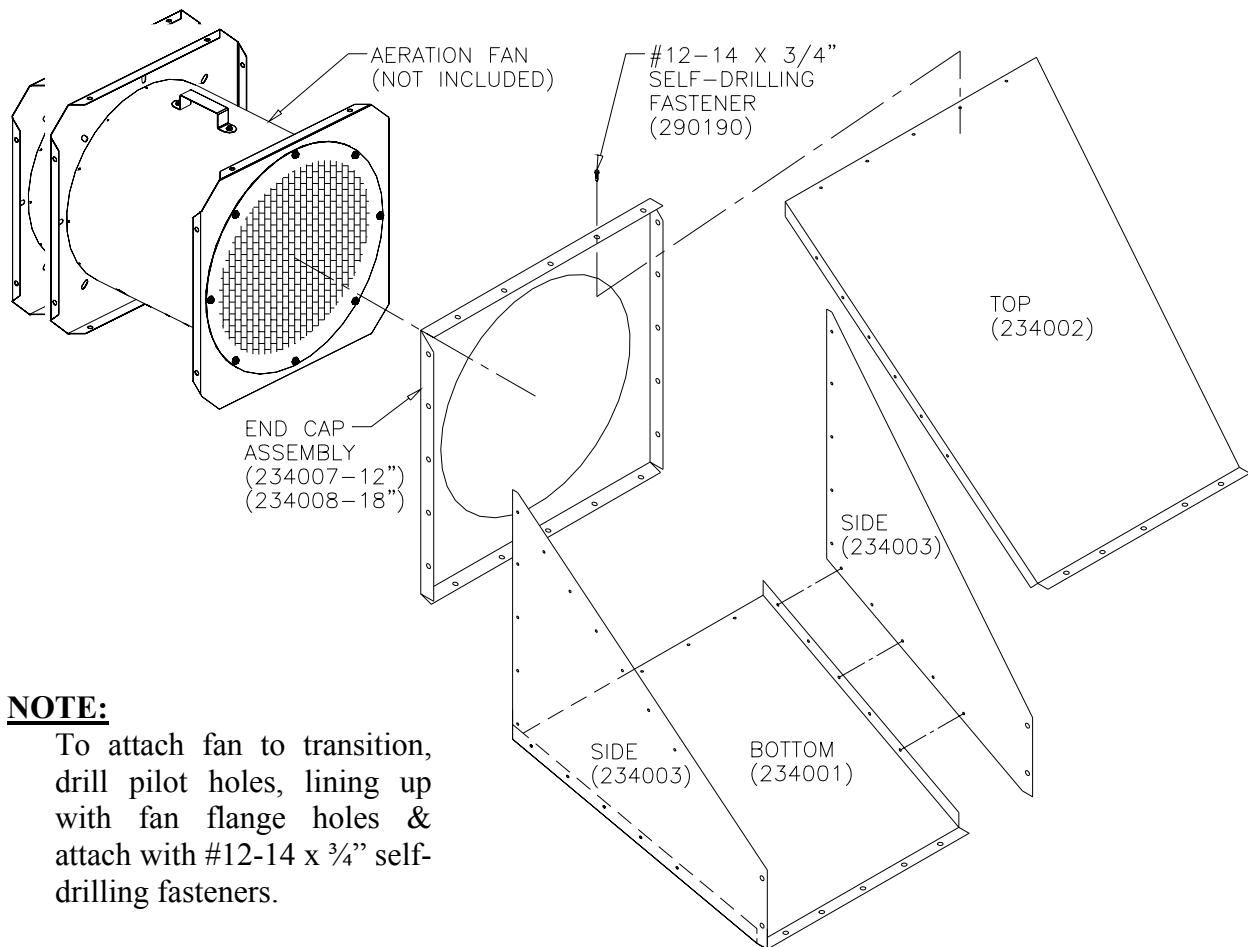
BIN DIA.	RECESSED AREA - A	PLANK LENGTH - B
15'	7' 1-1/2" SQ.	7' 1"
18'	9' 5-1/2" SQ.	9' 5"
21'	10' 7-1/2" SQ.	10' 7"
24'	11' 9-1/2" SQ.	11' 9"
27'	12' 11-1/2" SQ.	12' 11"
30'	15' 3-1/2" SQ.	15' 3"
33'	16' 5-1/2" SQ.	16' 5"
36'	17' 7-1/2" SQ.	17' 7"
42'	21' 1-1/2" SQ.	21' 1"
48'	23' 5-1/2" SQ.	23' 5"



1. Raised transition (either 12" [300 mm] or 18" [460 mm]).
2. Slab.
3. Grain bin/silo.
4. Forms (233001-003) included to edge of square floor aeration only. Plain planking spans duct.
5. 7" (180 mm) channel lock perforated floor planking.
6. Additional aeration system required on 23-48SQ only.
7. Bin well & tube (in concrete).
8. Entire square floor is recessed in concrete 1-5/8". Trough under square floor formed by others.

SQUARE FLOOR AERATION PLAN VIEW

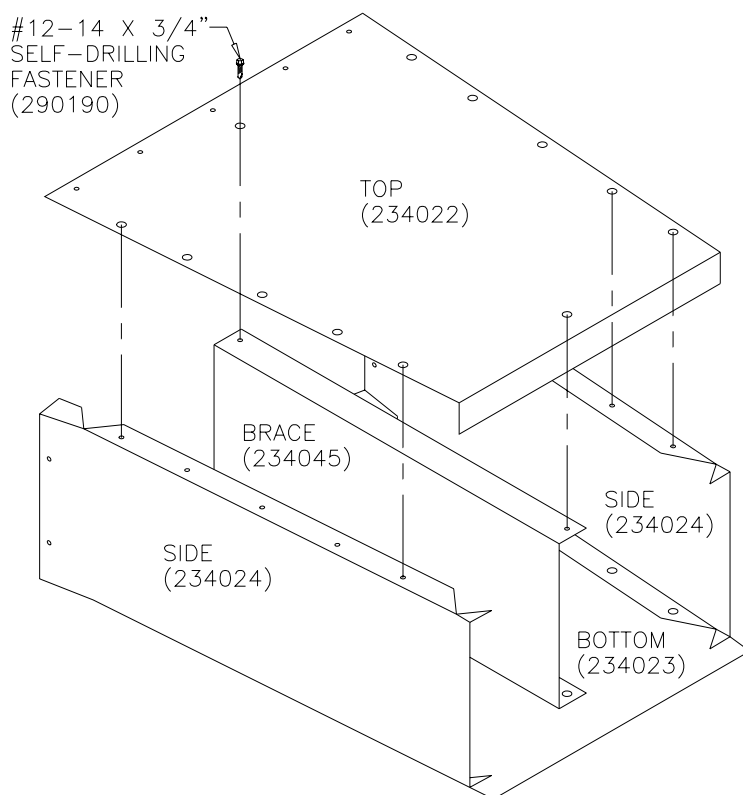
RAISED TRANSITION ASSEMBLY



NOTE:

To attach fan to transition, drill pilot holes, lining up with fan flange holes & attach with #12-14 x 3/4" self-drilling fasteners.

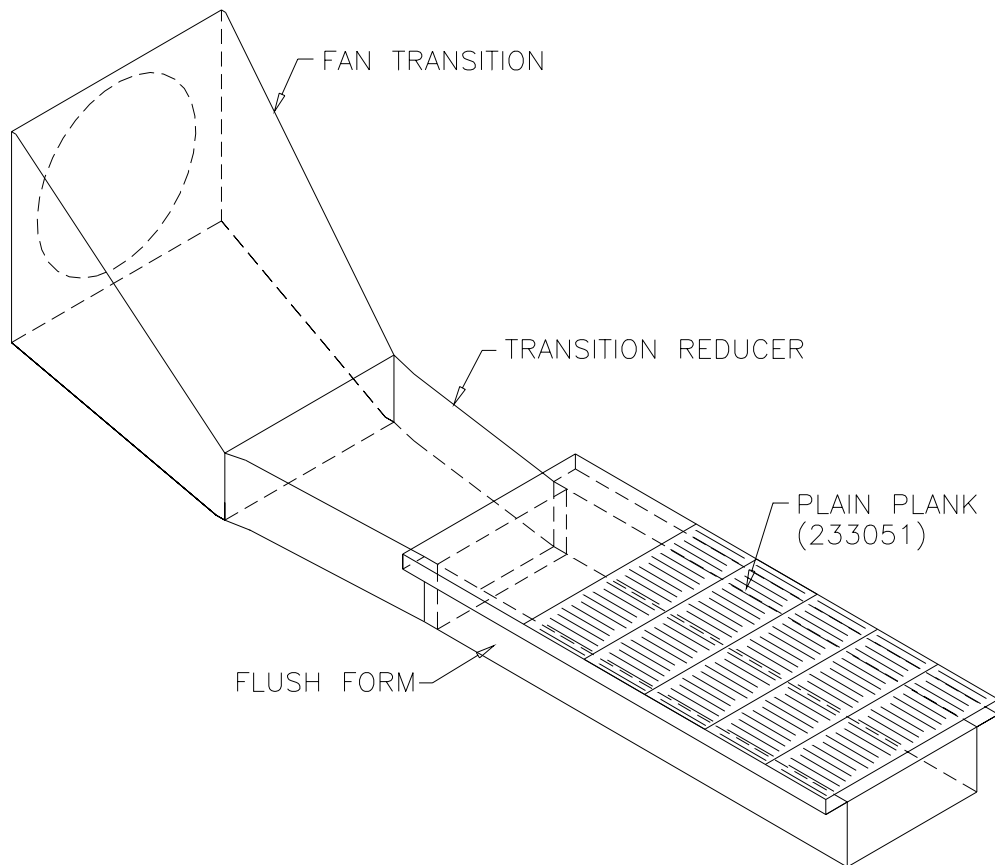
RAISED TRANSITION REDUCER ASSEMBLY



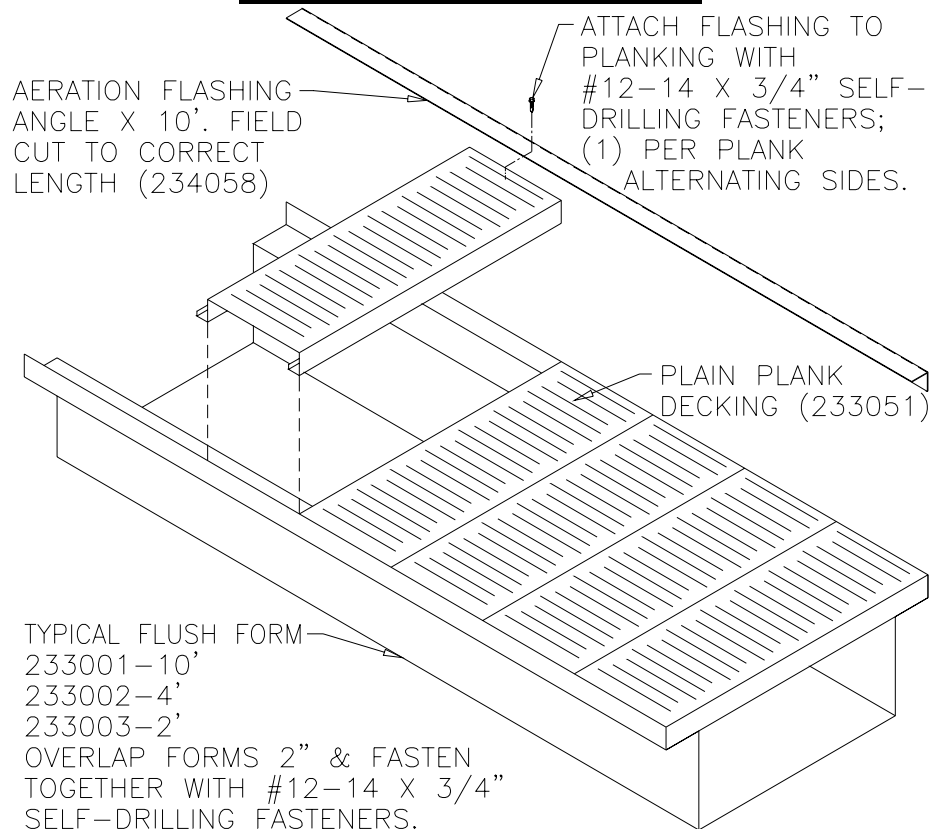
NOTE:

Assemble reducer parts together with #12-14 x 3/4" self-drilling fasteners.

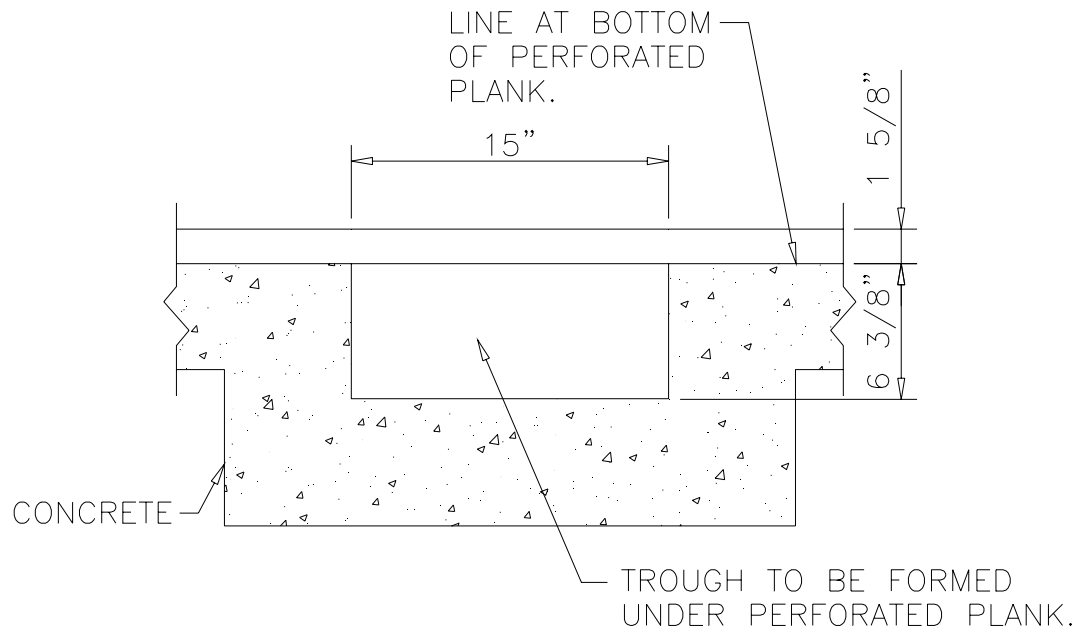
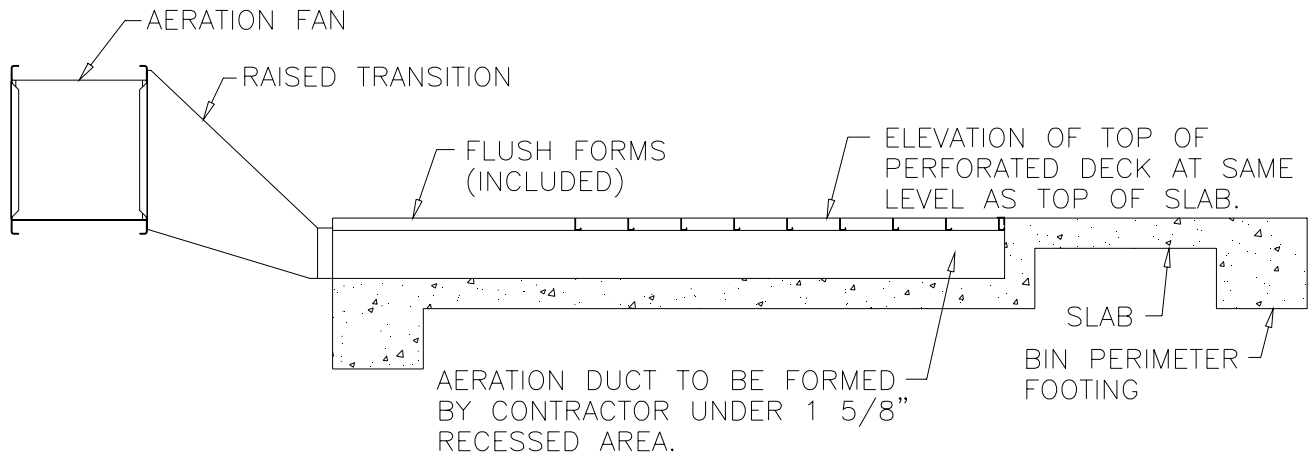
RAISED TRANSITION & DUCT ASSEMBLY



FLUSH FORM ASSEMBLY



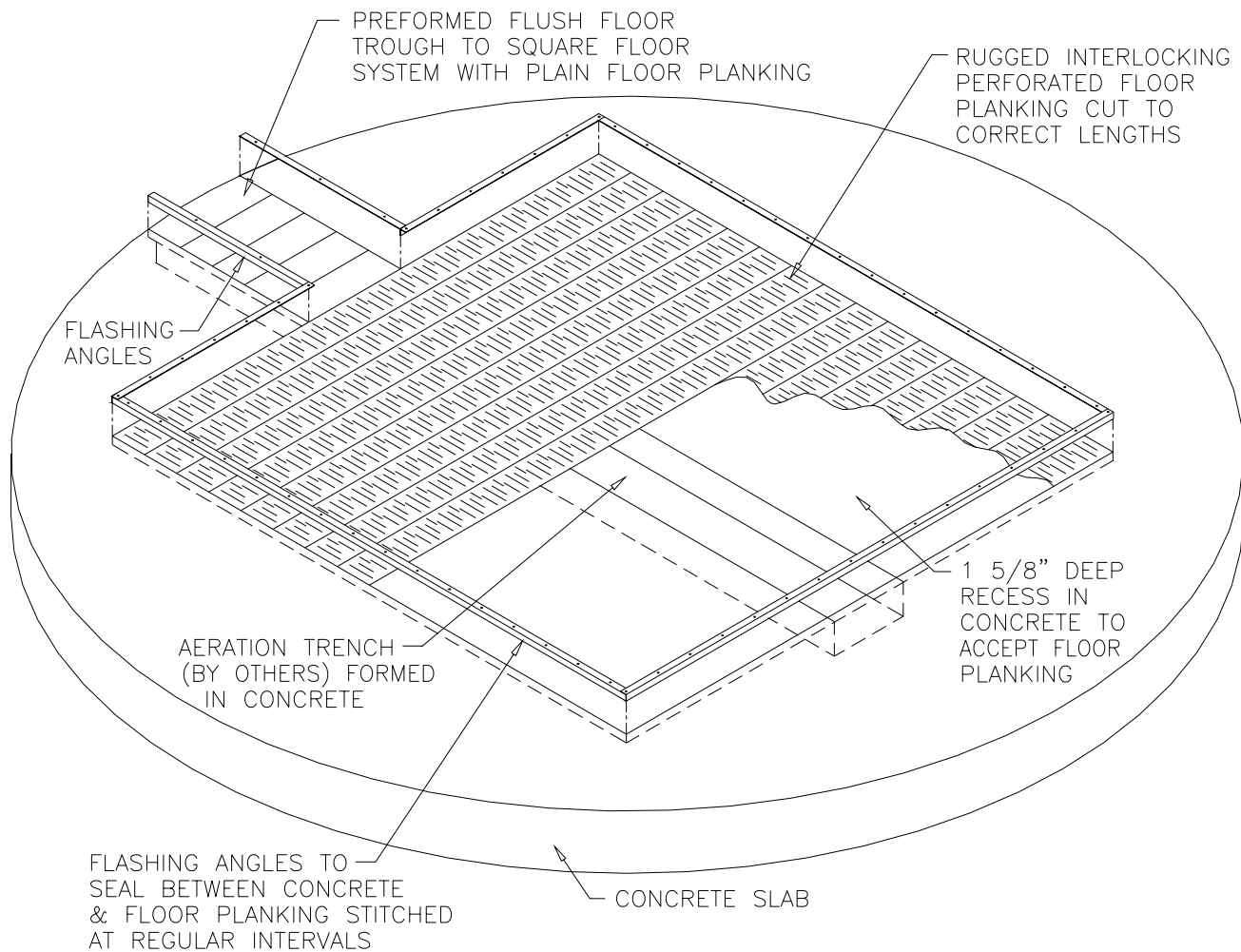
CROSS SECTION THROUGH BIN FOUNDATION



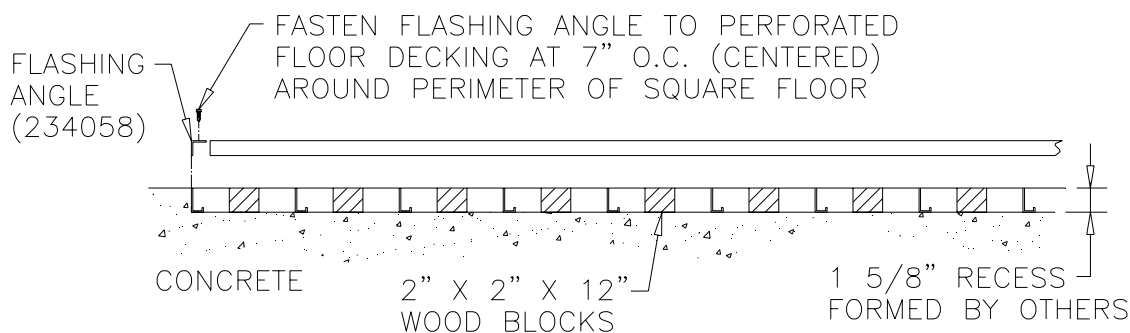
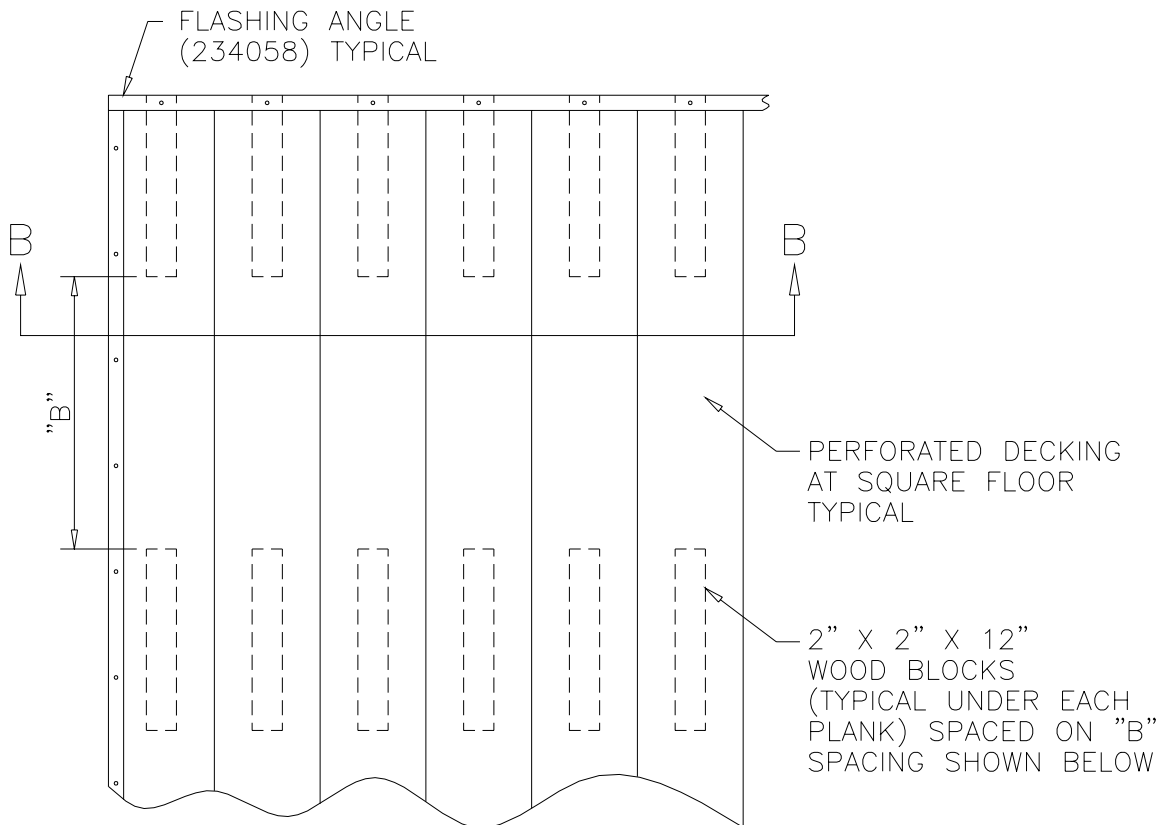
SECTION A-A

AERATION DUCT UNDER PERFORATED PLANK TROUGH TO BE FORMED BY CONTRACTOR

ISOMETRIC VIEW OF SQUARE FLOOR AERATION SYSTEM



PLAN VIEW SQUARE FLOOR



SECTION B-B

NOTES:

- Plank flange must bear on concrete full length of plank.
- Wood blocking is recommended to avoid expansion of planking due to vertical grain pressures.

MAXIMUM EAVE HEIGHT	"B" SPACING
14'	36"
18'	34"
22'	32"
25'	32"
32'	30"
40'	27"
48'	24"
57'	21"
64'	18"



SCAFCO Grain Systems Company

6200 E. Main Avenue

PO Box 11215

Spokane, WA 99211-1215, USA